

# Downton Abbey® The Egyptian Collection

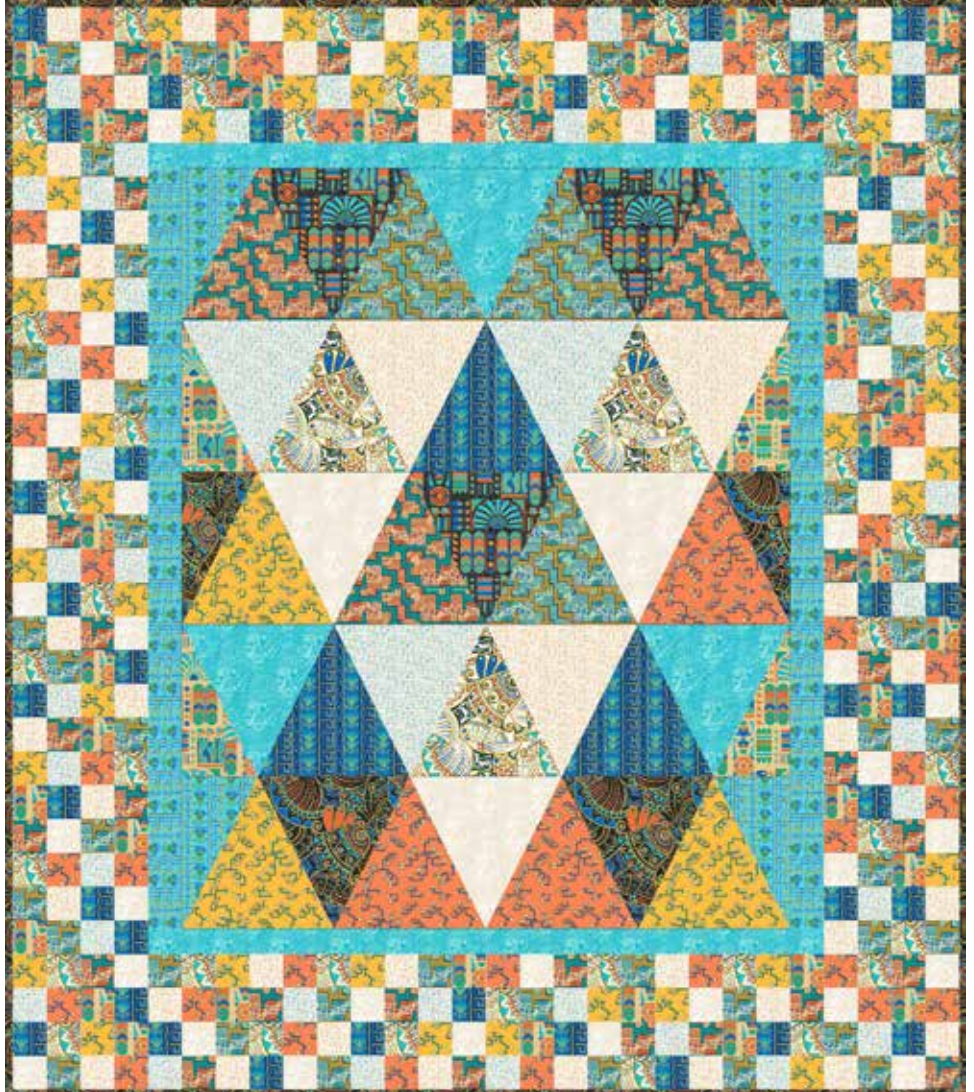
FABRICS BY KATHY HALL



Isis Quilt Design:  
Lucy Fazely

Quilt Size: 56" x 64"

[andoverfabrics.com](http://andoverfabrics.com)



## About The Egyptian Collection

As a result of Howard Carter finding Tutankhamun, an Egyptian design trend was born. Lotus blossoms, hieroglyphs, amulets, and other Egyptian motifs are captured in this fabric collection. The colors are reminiscent of the precious jewels found in the treasures themselves: lapis, onyx, carnelian, turquoise, and especially gold.

Downton™ and Downton Abbey®. ©2014  
Carnival Film & Television Limited. All Rights Reserved.

andover

•  
•  
•  
•  
makower uk  
*The Henley Studio*

Free Pattern Download Available

1384 Broadway New York, NY 10018  
Tel. (800) 223-5678 • [andoverfabrics.com](http://andoverfabrics.com)

7/7/14

# Isis Quilt



Introducing Andover Fabrics new collection:

Downton Abbey® – The Egyptian Collection by Kathy Hall

Quilt design by Lucy Fazely

Quilt finishes 56" x 64"

*The opening of King Tut's tomb in 1922 brought about a great curiosity in Egyptian design elements. The Crawley family of Downton Abbey would have been aware of this upsurge in interest. This collection draws upon elements in Egyptian art to make a bold statement in this richly colored wall quilt.*

## Cutting Directions

**Note:** Read assembly directions before cutting patches and refer to quilt photograph for fabric placement. WOF designates the width of fabric from selvedge to selvedge (approximately 42" wide).

- 4 Lt. Prints**      Cut (9) full triangles total  
Cut (9) 2½" x WOF strips in half
- 2 Med./Lt.**      Cut (3) full triangles total  
Cut (2) half triangles total  
Cut (2) half triangles reversed total  
Cut (4) 2½" x WOF strips in half
- 2 Blue Prts.**      Cut (3) full triangles total  
Cut (2) half triangles total  
Cut (2) half triangles reversed total  
Read steps 3-4 for border
- 5 Bright Prts.**    Cut (15) full triangles total  
Cut (13) 2½" x WOF strips in half
- 2 Dk. Prints**      Cut (5) full triangles total  
Cut (1) half triangle  
Cut (1) half triangle reversed  
Read step 9 for binding

**Also needed:** template plastic

## Fabric Requirements

(1) 10" square pack, (1) 2½" strip pack

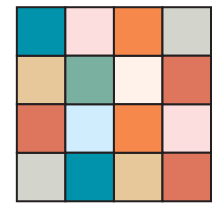
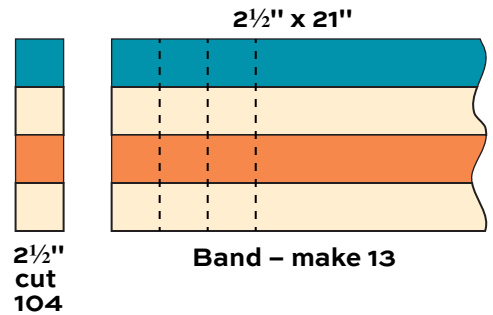
		Yardage	Fabric	
<b>4 Lt. Prints</b>	setting	9 squares	7622-L	7625-KT
		+ 9 strips	7625-LO	7317-N
<b>2 Med./Lt.</b>	setting	5 squares	*7619-ML	7620-MLN
		+ 4 strips		
<b>2 Blue Prts.</b>	setting + border	5 squares	7621-MLT	7622-KT
		+ 5 strips		
<b>5 Bright Prts.</b>	setting	15 squares		
		+ 13 strips	7621-MKB	7623-KN
			7623-LT	7624-KO
			7624-LO	
<b>2 Dk. Prints</b>	setting + binding	6 squares	7619-MK	7620-MK
		+ 6 strips		
<b>Backing</b>		3¾ yards	*7619-ML	

## Making the Quilt

1. Trace the half triangle on template plastic. Add ¼" seam allowances all around. To make the full triangle, trace the half triangle on plastic, flip the plastic over and trace the other half, matching the dashed lines. Add ¼" seam allowances all around. Referring to the quilt photograph, cut 35 full triangles, 5 half triangles, and 5 half triangles reversed from the appropriate fabrics.
2. Look at the overall design to notice that the white triangle patches form a large inverted triangle in the center of the quilt. The 2 blue prints, 2 medium/light prints, and 2 dark prints are placed in strategic spots in and around the white design. Referring to the Quilt Diagram, on a large flat surface or design wall, position 7 full triangles, 1 half triangle, and 1 half triangle reversed to make the top row. Likewise, arrange the patches into 4 more rows. Stand back to be certain that the light, medium/light, blue, and dark triangles are in the correct positions. Hint: The positioning of the bright print triangles is less critical to the overall design. Arrange them as you wish around the other patches. Once you are satisfied, join the patches into rows. Join the rows.

# Isis Quilt

3. Cut one strip of striped blue print (7621-MLT) in half. Join the half strip with a WOF strip to make a side border, sewing with a straight seam so the print looks continuous. Sew to one side of the quilt, and trim the ends even with the top and bottom of the quilt. Repeat for the opposite side.
4. Trim 2 blue strips (7622-KT) to 1½" wide. Sew one strip to the top and one to the bottom of the quilt, trimming ends even with the sides of the quilt.
5. To make the pieced border, refer to the Band diagram and sew any 2 light or medium/light 2½" x 21" strips alternately with any 2 bright strips to make a band. Make 13 bands, each with a different combination of strips. Cut each band into 8 segments, each 2½" wide. Cut a total of 104 segments. Hint: If a band isn't long enough to cut 8 segments, there are enough leftover strips to make additional bands as needed.



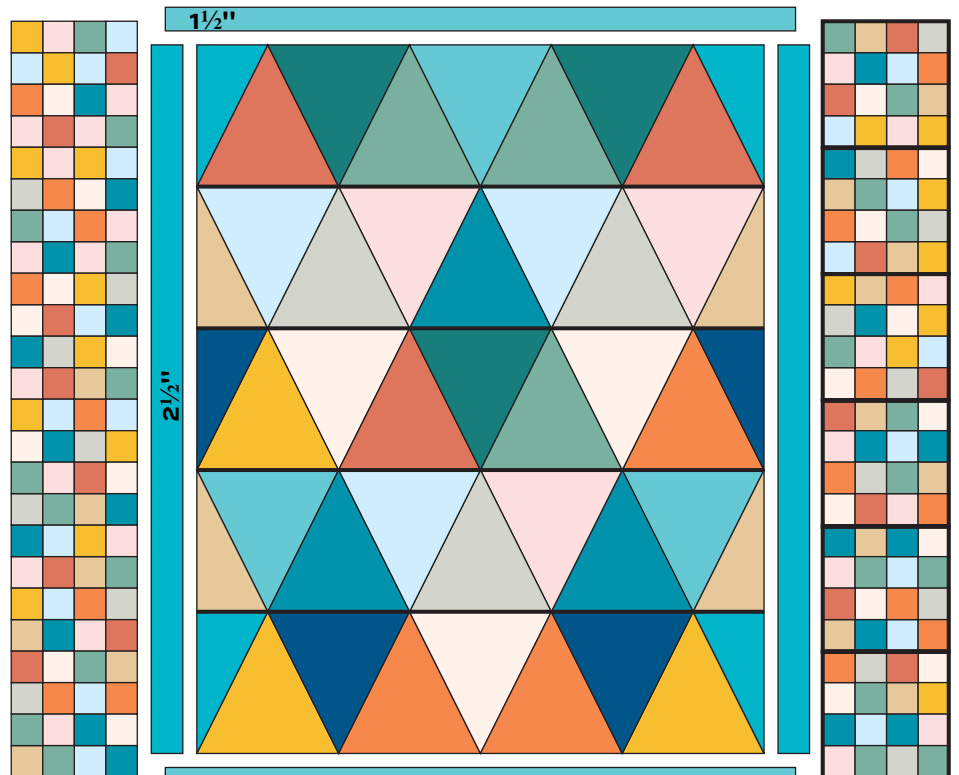
**Border Unit – make 26**

6. Sew 4 different segments together, rotating every other one as shown, to make a Border Unit. The unit should measure 8½" from edge to edge. If it does not, adjust your sewing and pressing techniques. Make 26 Border Units.
7. Join 6 Border Units side by side to make a border. Sew to the side of the quilt. Repeat for the opposite side. Join 7 Border Units side by side to make a border. Sew to the top of the quilt. Repeat for the bottom.

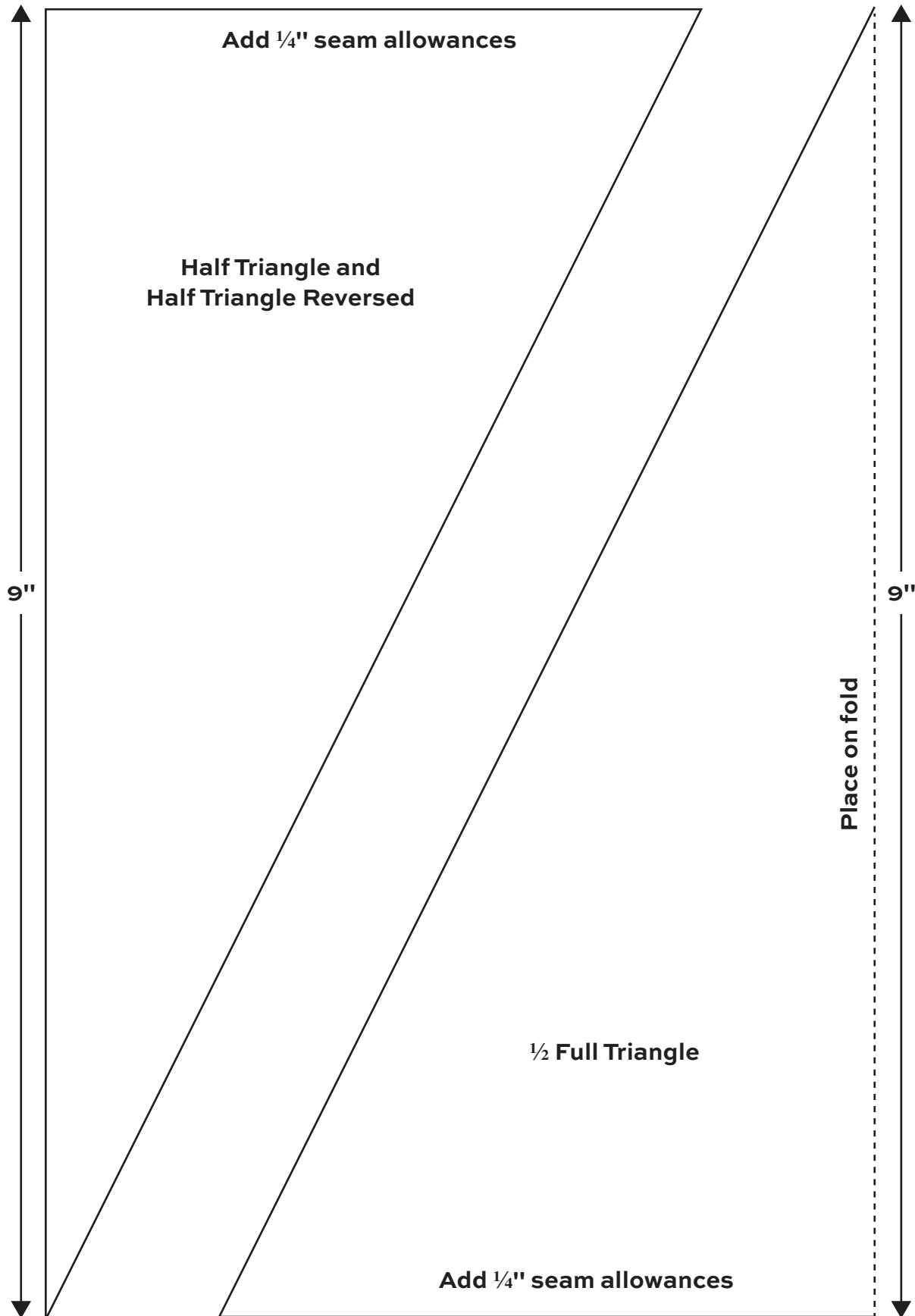


## Finishing the Quilt

8. Layer the quilt with batting and backing and baste. Quilt in the ditch around borders and block patches. Quilt a motif of your choice in the large triangles.
9. Join 6 dark print strips end to end to make the binding. Trim the strip to 2¼" wide if you prefer. Bind the quilt in the usual manner.



**Quilt Diagram**



# Downton Abbey®

## The Egyptian Collection



FABRICS BY KATHY HALL



7619-MK



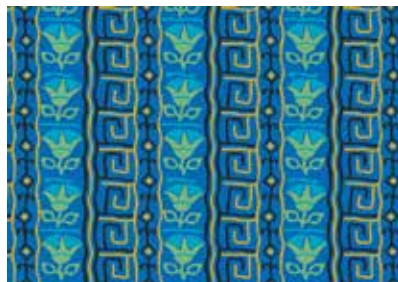
7620-MK



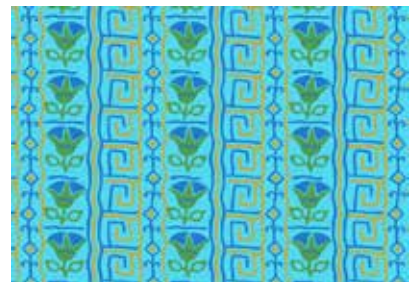
7620-MLN



7619-ML



7621-MKB



7621-MLT



7622-KT



7622-L



7623-KN



7623-LT



7624-KO



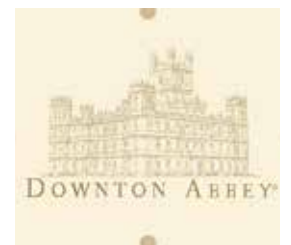
7624-LO



7625-KT



7625-LO



7317-N

All fabrics used in quilt pattern. Fabrics shown are 25% of actual size.

andover

•  
• makower uk  
• *The Henley Studio*

Free Pattern Download Available

1384 Broadway New York, NY 10018  
Tel. (800) 223-5678 • andoverfabrics.com

7/7/14